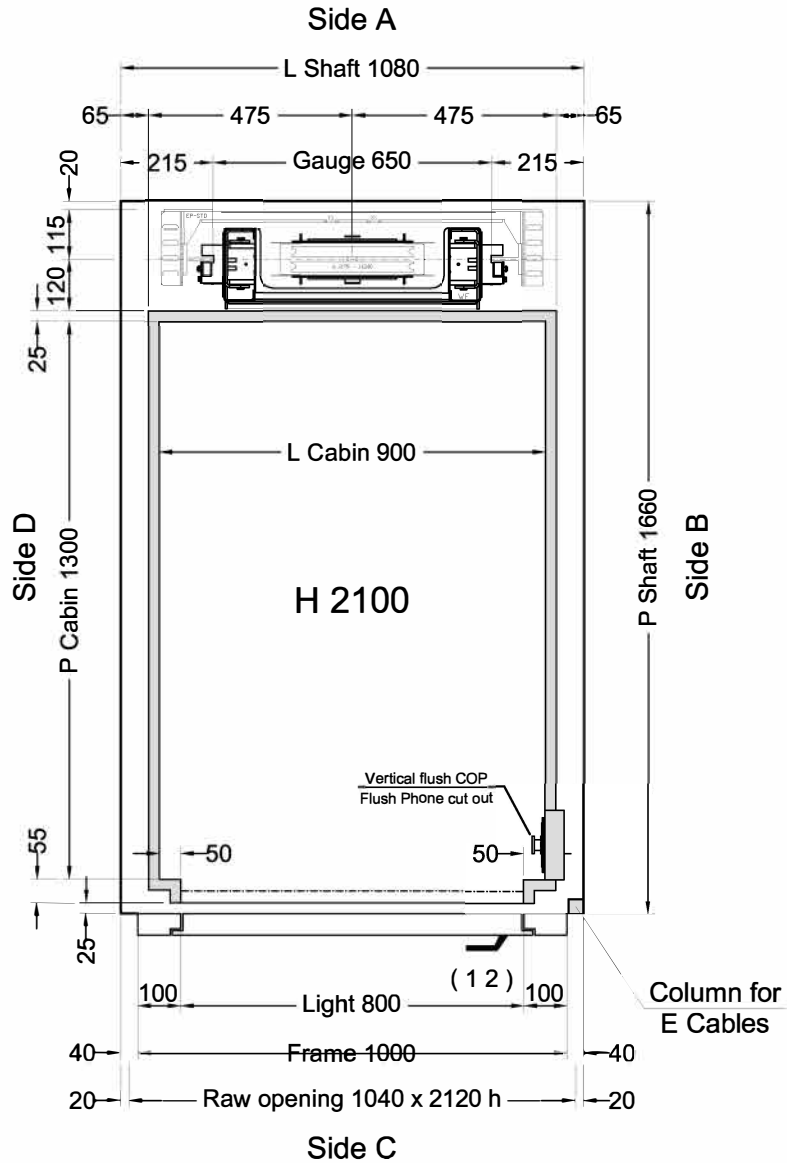


## FLOOR DOOR

Side B	Side C	Side D	VERSION	H LIGHT	H FRAME	FRAME	WINDOW	GLASS	ACCESSORIES
	1 2		Standard Rust-proof - <u>No raised edges</u>	2000	2100	<u>Rust-proof - No raised edges</u>	Absent		<u>Doors Hold Open Latch</u>

C1 = Enabling key for the floor button pad (single insertion) C2 = Enabling key for the floor button pad (double insertion) PM = Button pad on the wall PE = Outside lock and button pad

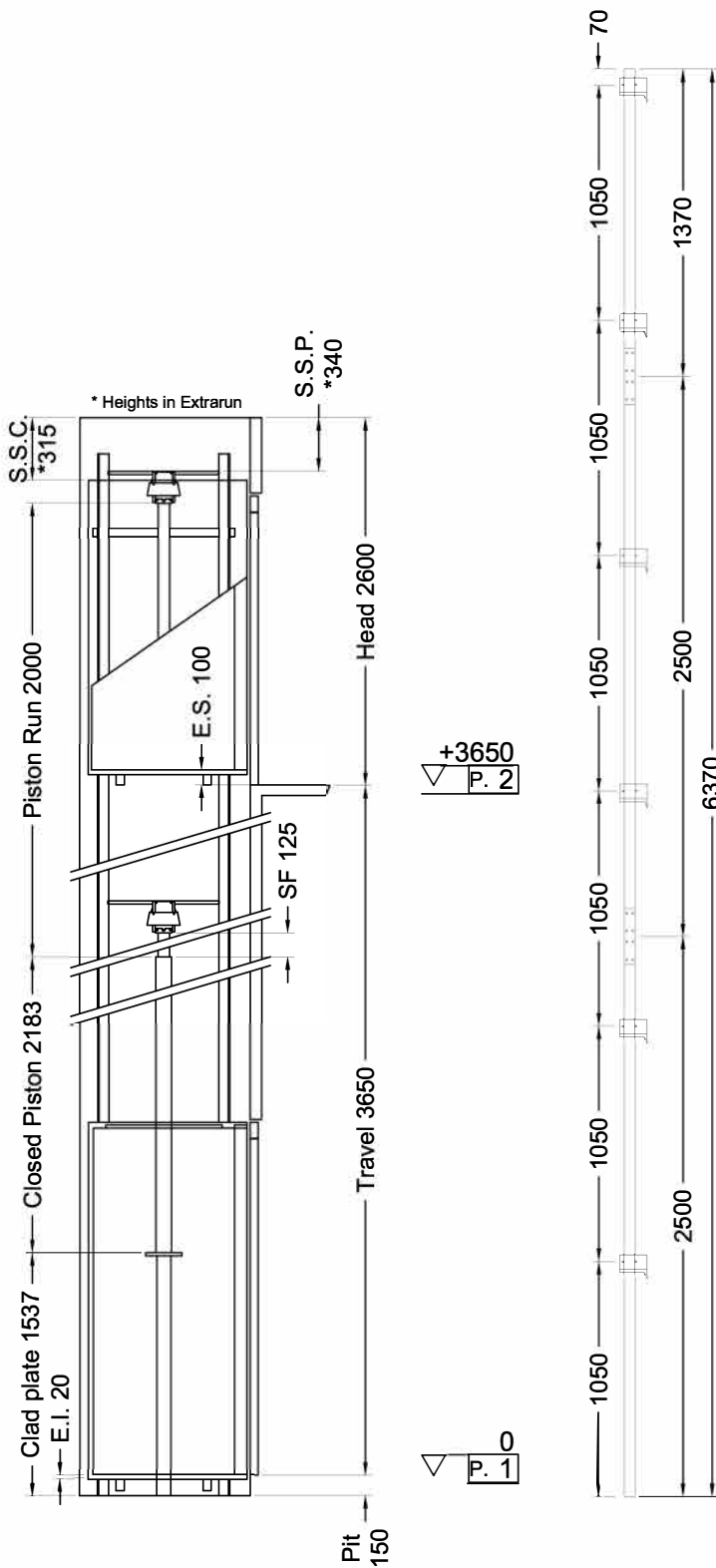


**Stops: 2 - Doors: 2**

Customer own flooring: Dimensions **900 (L) x 1325 (P)** thks **20 mm** Weight: **50 kg**

Shaft in **Shaft at Client expense (Struttura a carico Cliente)**

ORDER NUMBER	VERSIONS	Description	Designer	Date	Final Drawings	
		Corsa; Co retto ife ifimento. modifiche varie	L. Del Bianco D.Ogliastro	29/03/2017 17/03/2017		SHEET DIMENS. <b>A3</b>
			Final Drawings D.Tomei	1° STESURA 31/03/17		SCALE <b>1:12.5</b>
			CAPACITY	AREA m²	CAPACITY	
			<b>350 kg</b>	<b>1,17</b>		



Indirect Installation Speed 0,3 m/s 31/03/17 14.51 (V.2952) <sup>62D</sup>

THRUST DURING NORMAL OPERATION				THRUST OF SAFETY DEVICE INTERVENT.			
P	(N)	11368		P	(N)	550	
N	(N)	587		N	(N)	7616	
F1	(N)	1874		F1	(N)	3123	
F2	(N)	244		F2	(N)	406	

SPACES		PRESSURES		
E.I.	Extrarun below cabin (mm)	20	Max static pressure (bar)	38,13
E.S.	Extrarun above cabin (mm)	100	Min static pressure (bar)	20,29
SF.	Piston extraction (mm)	125	Overpressure limit (bar)	53,38
S.S.P.	Piston/head (mm)	340	Residual pressure (bar)	1,43
S.S.C.	Cabin/head (mm)	315		

HYDRAULIC UNIT		MECHANICAL PARTS	
Central unit	GMV HL 3010 (-*)		
Capacity (l/min)	35	Guide rails	70x70x9
Motor (V)	MF230V	Brackets	(Nr) 6
Power (Kw)	2,9	Ropes	Ø 9 mm 6-(1+9+9)
Nominal current (A)	27	Cables length (mm) 2 x	9000
Piston	OMARLIFT HC (Ø)70x5x2000	Min actual breaking load (N)	47300
Opt. oil position	BASSO		
Tubing	3/4" EN 853 1SN - FD 3/4" - FD M30X2		
Tubing length (mm)	11000		
Min hydraulic oil (L)	42		

SECURITY DEVICES	Manufacturer	Model	Certificate
Safety Gear	PFB	BP1	TÜV AFV515
Block Valve	OMARLIFT	HC-34	TÜV 44 208 07 352266 004
Key Locks	Prudhomme	PLT/L/CPX NL 11-400-1002-125-02	

MACHINERY LOCATION			
At floor	1	Length of the hose travel	7000 (mm)
Cables enter in shaft: Side	A		

CABIN	CABIN ACCESSORIES
Panels	Galvanized sheet
Finishes	RAL 9003 Matt Smooth
Oper. panel	Vertical - Flush mounted - Inox Scotch Brite - Corner B/C
Floor	By Customer
Ceiling	SPOTS LED - Bianco A1

**OTHER ACCESSORIES**

Enabling key for the cabin button pad, double insertion  
 Guides dimension 2.5 m  
**Two speed**  
 Doors without handles (and without holes for handles)  
**Telephone by Lift Shop**  
 Cabinet: Similinox F12PPS  
 Full height infra-red curtain V2  
**Flush Phone cut out on Profile B/C**  
 Automatic Control 2011  
 Call Accept + Emergency manual descent from cabin  
**Doors Hold Open Latch**



ORDER  
ORDER NUMBER

CLIENT

Final Drawings  
D.Tomei  
1° STESURA  
31/03/17  
Final Drawings  
SCALE  
OUT OF SCALE  
SHEET  
2/2